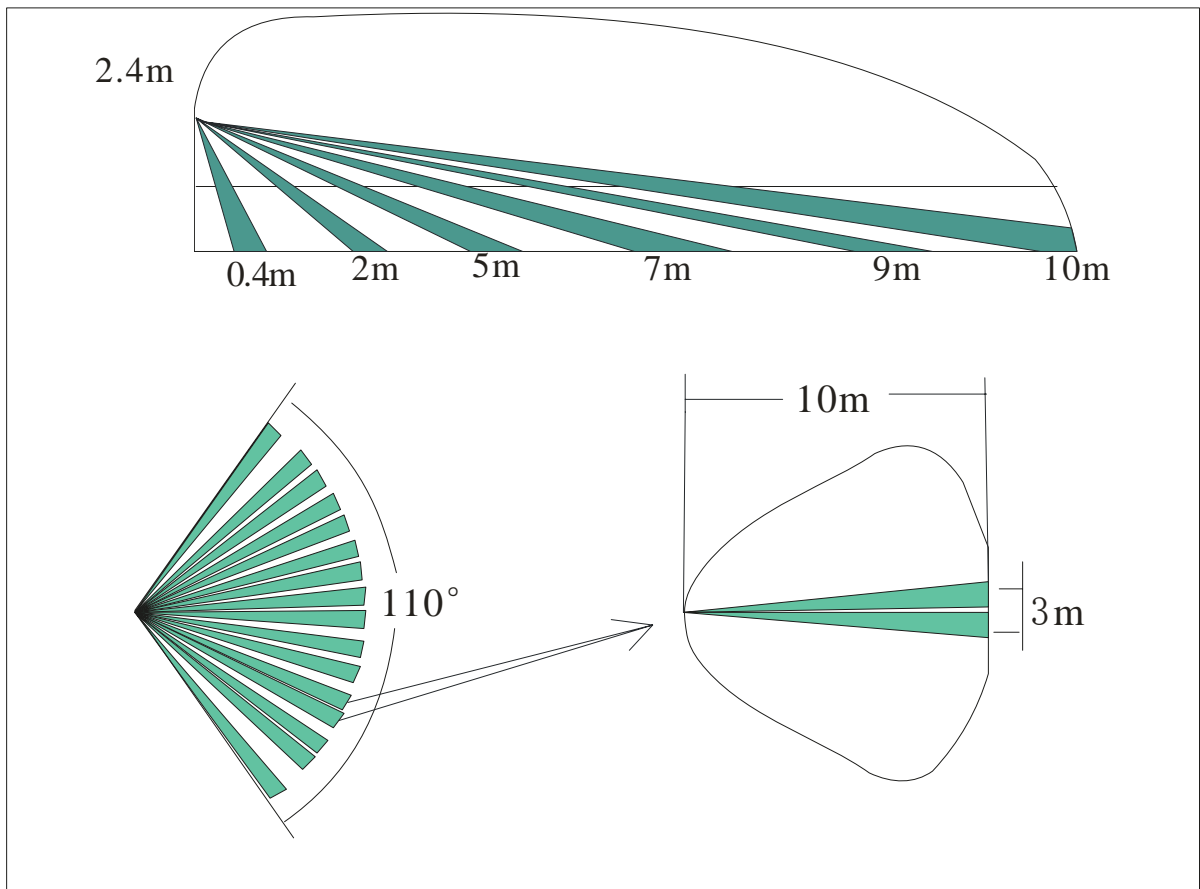


Model No.: iDo-PIR+Micro-Anti Masking-10 PIR and Microwave Detector,
Anti Masking, Detecting Distance: 10m

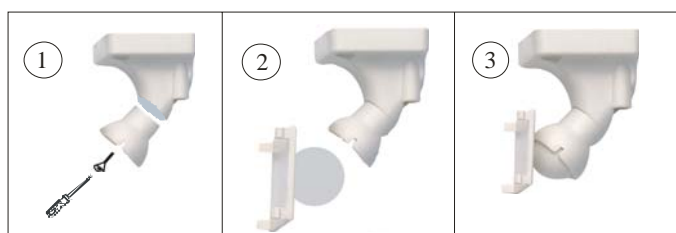


Features

- PIR and Microwave Technology
- Microprocessor Design
- Anti Masking (it is able to detect the intrusion if there is any barrier block the intruder)
- Real Temperature Compensation
- Microwave Range is Adjustable
- Anti white Light
- Look Down Zone Design
- Low Power Consumption
- High RFI Immunity to Reduce False Alarm (30V/m at 10Mhz to 1GHZ)
- Professional Optical Lenses
- Resist Fluorescent Interference
- Form-C Relay

Specification

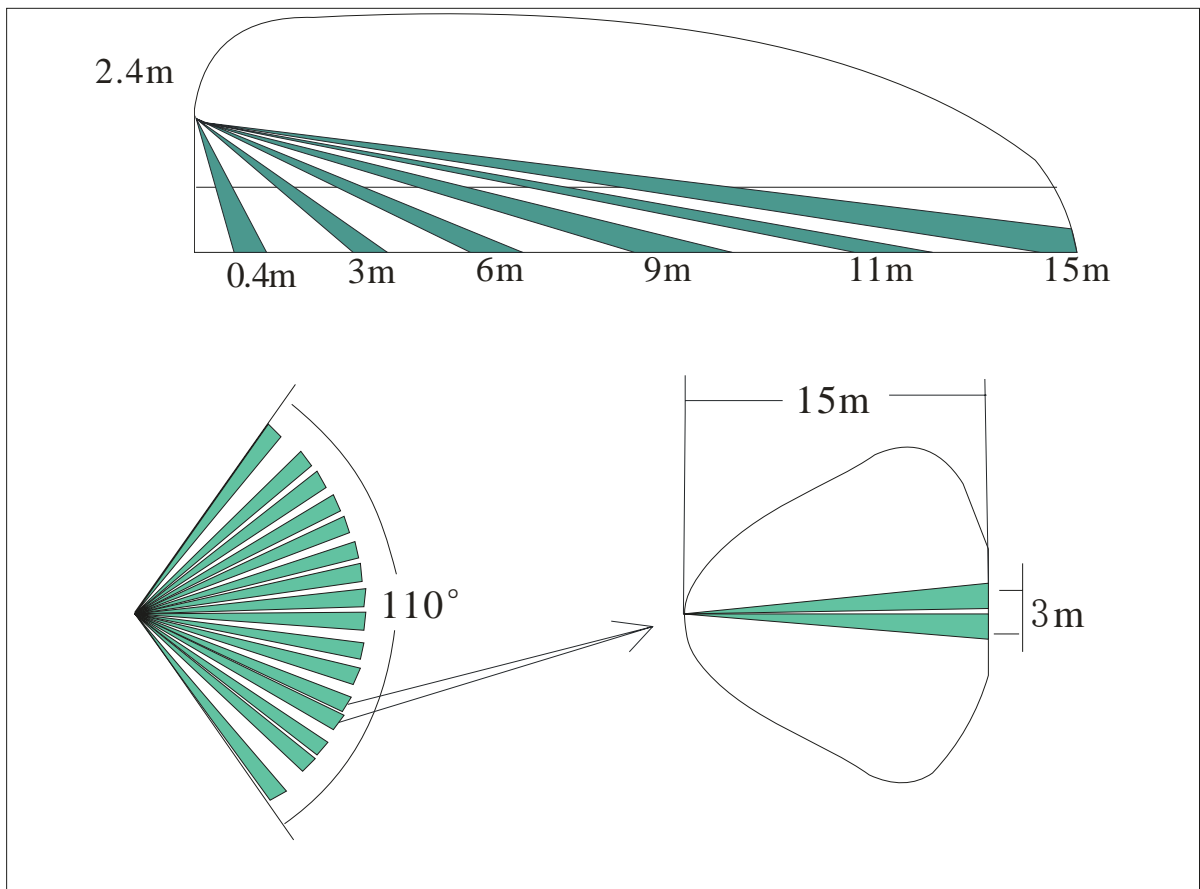
- Rated Voltage: 12VDC
- Operated Voltage: 9-16VDC
- Rated Current: 18mA at 12VDC
- Contacts of Alarm: NC, 12VDC, 50mA max
- Contacts of Tamper: NC, 12VDC, 100mA max
- Installation Height: 2.4m
- Anti Masking: it is able to detect the intrusion if there is any barrier block the intruder
- Detecting Distance: 10m (under 26°C in indoor room. If the room temperature is close to 32°C, detecting distance will be shorter than 10m)
- Detecting Angle: 110°
- Microwave Frequency: 10.525GHZ
- Time to Alarm: 2.2s (from the time that the detector detects alarm, until it sends signal to the Control Panel)
- Time to Warm-up: 2 minutes
- RFI characteristic: 30V/m at 10Mhz to 1Ghz
- Operating Temperature: -0° C to 55° C
- Storage Temperature: -20° C to 60° C
- Size (L*W*H): 128 x 64 x 40mm
- Below bracket is needed when installation. Bracket model No. is AA93. It is a Multi-Directional Bracket. You can install it in the Corner, Wall or Ceiling



Model No.: iDo-PIR+Micro-Anti Masking-15

PIR and Microwave

Detector, Anti Masking, Detecting Distance: 15m

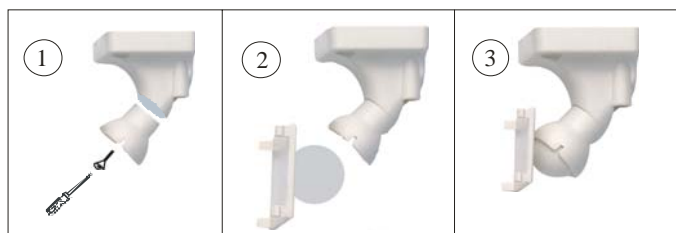


Features

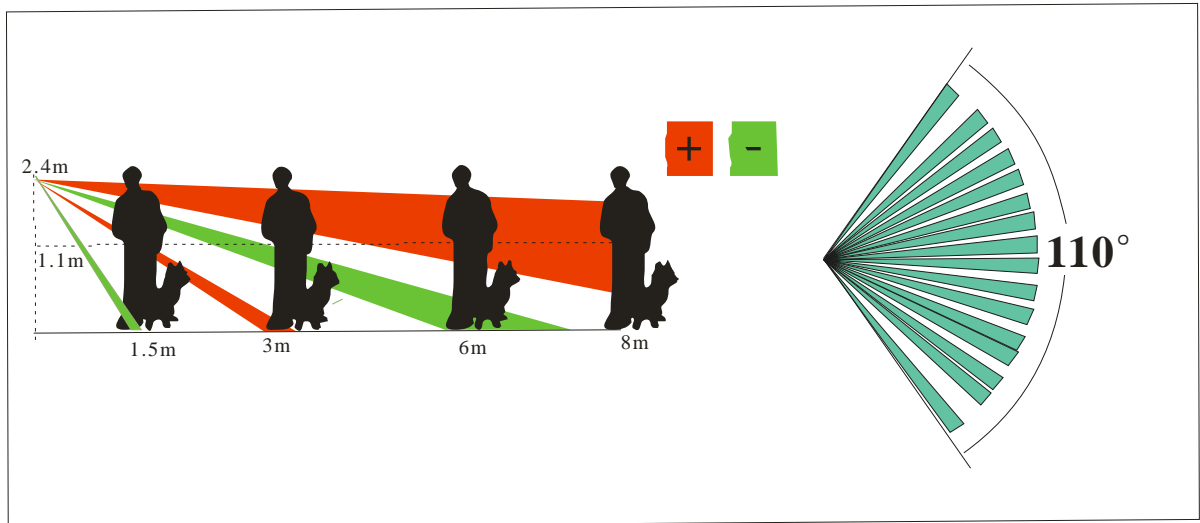
- PIR and Microwave Technology
- Microprocessor Design
- Anti Masking (it is able to detect the intrusion if there is any barrier block the intruder)
- Real Temperature Compensation
- Microwave Range is Adjustable
- Anti white Light
- Look Down Zone Design
- Low Power Consumption
- High RFI Immunity to Reduce False Alarm (30V/m at 10Mhz to 1GHz)
- Professional Optical Lenses
- Resist Fluorescent Interference
- Form-C Relay

Specification

- Rated Voltage: 12VDC
- Operated Voltage: 9-16VDC
- Rated Current: 18mA at 12VDC
- Contacts of Alarm: NC, 12VDC, 50mA max
- Contacts of Tamper: NC, 12VDC, 100mA max
- Installation Height: 2.4m
- Anti Masking: it is able to detect the intrusion if there is any barrier block the intruder
- Detecting Distance: 15m (under 26°C in indoor room. If the room temperature is close to 32°C, detecting distance will be shorter than 15m)
- Detecting Angle: 110°
- Microwave Frequency: 10.525GHZ
- Time to Alarm: 2.2s (from the time that the detector detects alarm, until it sends signal to the Control Panel)
- Time to Warm-up: 2 minutes
- RFI characteristic: 30V/m at 10Mhz to 1Ghz
- Operating Temperature: -0° C to 55° C
- Storage Temperature: -20° C to 60° C
- Size (L*W*H): 128 x 64 x 40mm
- Below bracket is needed when installation. Bracket model No. is AA93. It is a Multi-Directional Bracket. You can install it in the Corner, Wall or Ceiling



Model NO.: iDo-PIR+Micro-Pet Immunity-8 **PIR and Microwave Detector,**
Pet Immunity, Detecting Distance:8m



Features

- PIR and Microwave
- Microprocessor Design
- Real Temperature Compensation
- Pulse Count Optional (1 or 2 or 3)
- Pet Immunity (35kgs)
- Microwave Frequency (10.525GHZ)
- Anti white Light
- Low Power Consumption

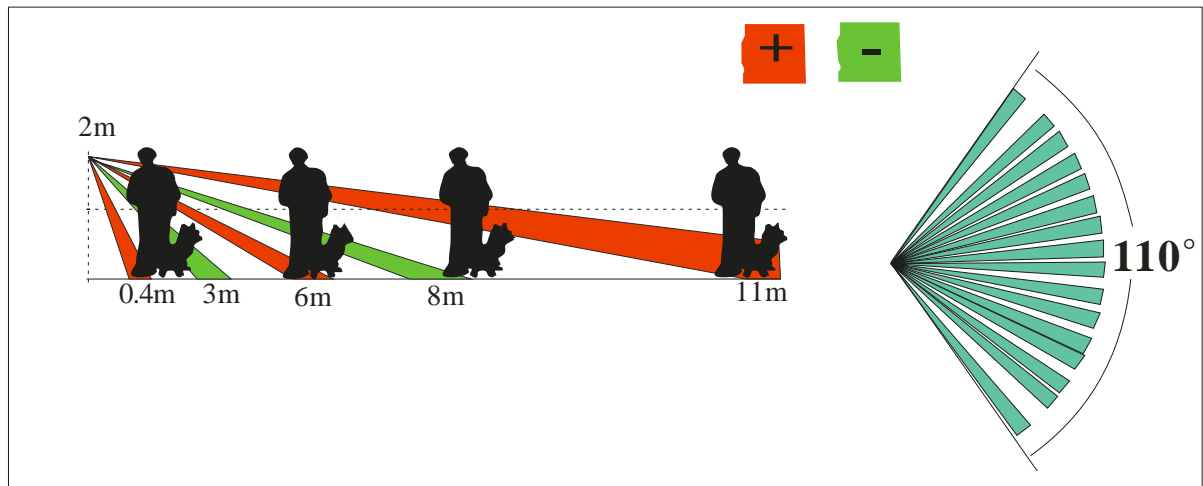
- High RFI Immunity to Reduce False Alarm (25V/m at 10Mhz to 1GHz)
- Professional Optical Lenses
- Resist Fluorescent Interference
- Form-C Relay
- Smart and Elegant Design is Ideal Selection for Residential Installations

Specification

- Rated Voltage: 12VDC
- Operated Voltage: 9-16VDC
- Rated Current: 12mA at 12VDC
- Contacts of Alarm: NC, 12VDC, 100mA max
- Contacts of Tamper: NC, 12VDC, 100mA max
- Pet Immunity: 35kgs
- Microwave Frequency: 10.525GHZ
- Installation Height: 2.4m
- Detecting Distance: 8m (under 26°C in indoor room. If the room temperature is close to 32°C, detecting distance will be shorter than 8m)
- Detecting Angle: 110°
- Time to Alarm: 2.2s (from the time that the detector detects alarm, until it sends signal to the Control Panel)
- Time to Warm-up: 2 minutes
- RFI characteristic: 25V/m at 10Mhz to 1Ghz
- Operating Temperature: -0° C to 55° C
- Storage Temperature: -20° C to 60° C
- Size (L*W*H): 107 x 58 x 39mm
- Below bracket is needed when installation. Bracket model No. is AA93. It is a Multi-Directional Bracket. You can install it in the Corner, Wall or Ceiling



Model No.: iDo-PIR+Micro-Pet Immunity-11 PIR and Microwave Detector,
Pet Immunity, Detecting Distance: 11m



Features

- PIR and Microwave Technology
- Microprocessor Design
- Pet Immunity: 45kgs
- Real Temperature Compensation
- Microwave Range is Adjustable
- Anti white Light
- Look Down Zone Design
- Low Power Consumption
- High RFI Immunity to Reduce False Alarm (30V/m at 10Mhz to 1GHz)

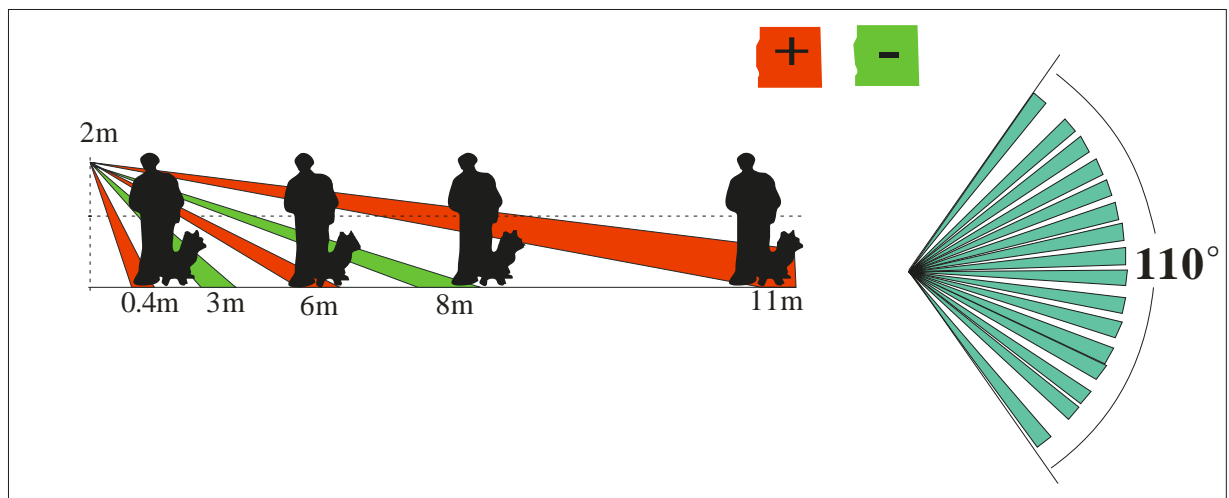
- Professional Optical Lenses
- Resist Fluorescent Interference
- Form-C Relay

Specification

- Rated Voltage: 12VDC
- Operated Voltage: 9-16VDC
- Rated Current: 25mA at 12VDC
- Contacts of Alarm: NC, 12VDC, 50mA max
- Contacts of Tamper: NC, 12VDC, 100mA max
- Installation Height: 2m
- Pet Immunity: 45kgs
- Detecting Distance: 11m (under 26°C in indoor room. If the room temperature is close to 32°C, detecting distance will be shorter than 11m)
- Detecting Angle: 110°
- Microwave Frequency: 10.525GHZ
- Time to Alarm: 2.2s (from the time that the detector detects alarm, until it sends signal to the Control Panel)
- Time to Warm-up: 2 minutes
- RFI characteristic: 30V/m at 10Mhz to 1Ghz
- Operating Temperature: -0° C to 55° C
- Storage Temperature: -20° C to 60° C
- Size (L*W*H): 128 x 64 x 40mm
- Below bracket is needed when installation. Bracket model No. is AA93 It is a Multi-Directional Bracket. You can install it in the Corner, Wall or Ceiling



Model No.: iDo-PIR+Micro-Anti Masking-Pet Immunity-11 PIR and Microwave Detector, Anti Masking, Pet Immunity, Detecting Distance: 11m



Features

- PIR and Microwave Technology
- Microprocessor Design
- Anti Masking (it is able to detect the intrusion if there is any barrier block the intruder)
- Pet Immunity: 45kgs
- Real Temperature Compensation
- Microwave Range is Adjustable
- Anti white Light
- Look Down Zone Design

- Low Power Consumption
- High RFI Immunity to Reduce False Alarm (30V/m at 10Mhz to 1GHz)
- Professional Optical Lenses
- Resist Fluorescent Interference
- Form-C Relay

Specification

- Rated Voltage: 12VDC
- Operated Voltage: 9-16VDC
- Rated Current: 25mA at 12VDC
- Contacts of Alarm: NC, 12VDC, 50mA max
- Contacts of Tamper: NC, 12VDC, 100mA max
- Anti Masking: it is able to detect the intrusion if there is any barrier block the intruder
- Pet Immunity: 45kgs
- Detecting Distance: 11m (under 26°C in indoor room. If the room temperature is close to 32°C, detecting distance will be shorter than 11m)
- Detecting Angle: 110°
- Microwave Frequency: 10.525GHZ
- Time to Alarm: 2.2s (from the time that the detector detects alarm, until it sends signal to the Control Panel)
- Time to Warm-up: 2 minutes
- RFI characteristic: 30V/m at 10Mhz to 1Ghz
- Operating Temperature: -0° C to 55° C
- Storage Temperature: -20° C to 60° C
- Size (L*W*H): 128 x 64 x 40mm
- Below bracket is needed when installation. Bracket model No. is AA93. It is a Multi-Directional Bracket. You can install it in the Corner, Wall or Ceiling

